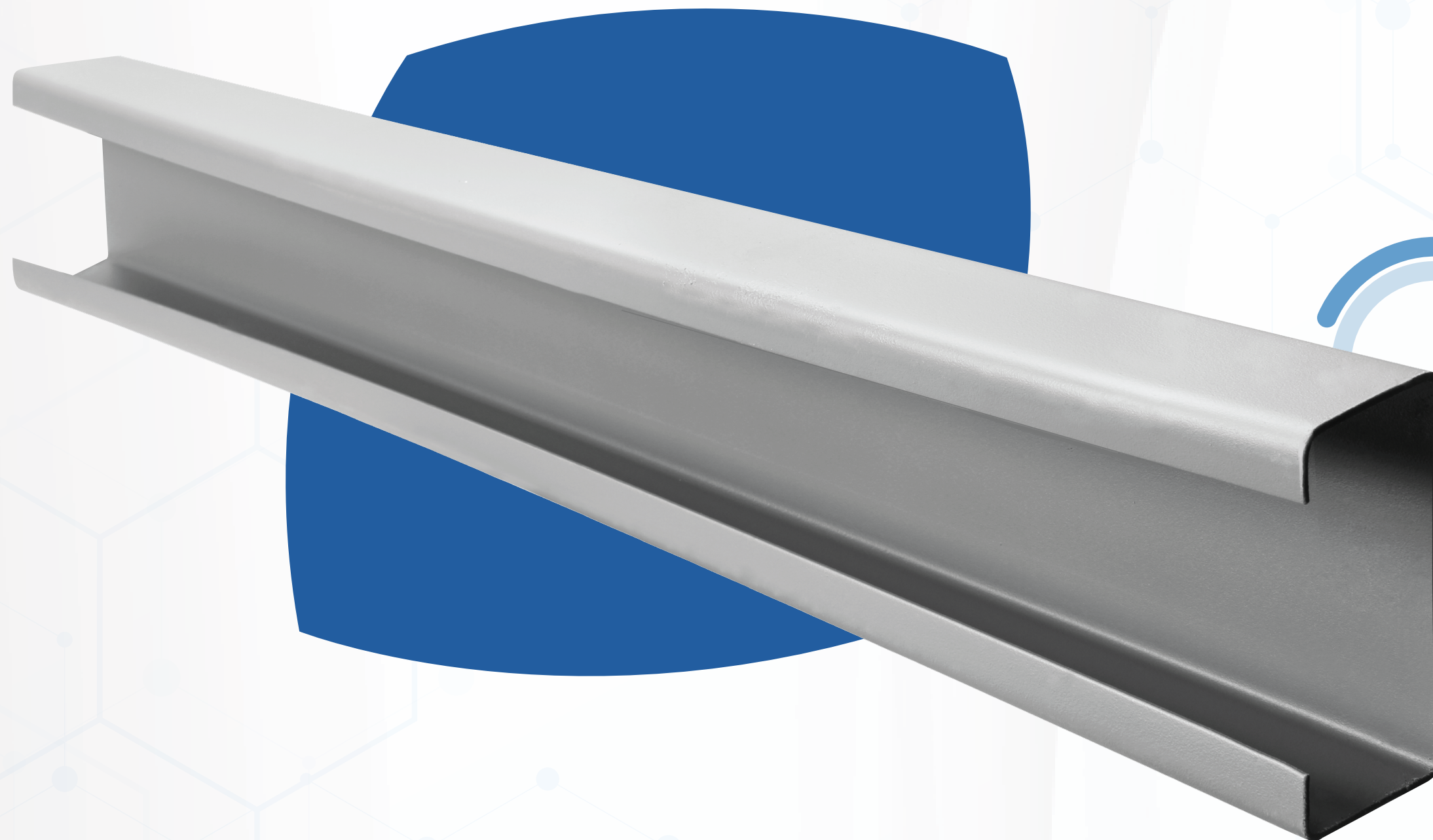


IDLER BEAM

Sections tables



Centro ejecutivo Punto Alto
Valle Escondido #5700 C.P. 31125
Fracc. Desarrollo El Saucito
Chihuahua, Chih. México
Tel. +52 (614) 4 29 92 00
01 800 523 0789
servclientes@esj.mx

COLD ROLLED ESJ QUALITY

Idler beams are up to ESJ reputation and meets the expectations for a top quality product. The idler beam is part of the ESJ product family, always committed with our reputed great quality and service preferred by our clients for more 10 years to meet their needs for the construction of metal structures.

WE SAVE YOU TIME WORKING FOR YOU

ESJ, a committed structure building, supplies the beam formed in cold and fully enabled for assembly on site, as always, complying with customer preferred delivery times. We have a wide range of cold rolled sections for all dimensions, oven cured painting and drilling process from the moment of manufacture, which it will assist the builder to reduce assembly times.



ADVANTAGES

- High quality standards.
- Efficient short spans.
- Fully enabled for assembly.
- Personalized customer service and attention.
- Production capacity: 1,500 metric tons per month.
- High strength
- Drill patterns and clips.
- Custom manufacturing.
- Paint system:
 - Shop Primer, Gray and White.
 - Vacuum curing chamber.
 - Drawer Enabled (Strut).

- You can rely in our installed capacity of more than 1500 metric tons per month at ESJ Facility in Juventino Rosas, Guanajuato, Mexico.

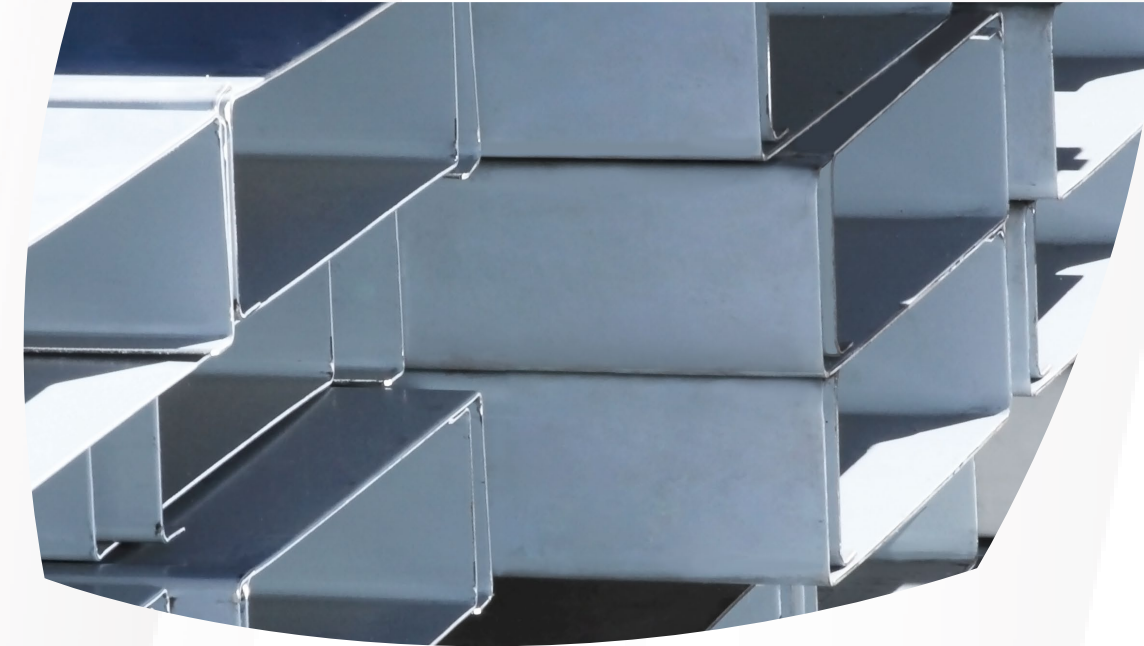
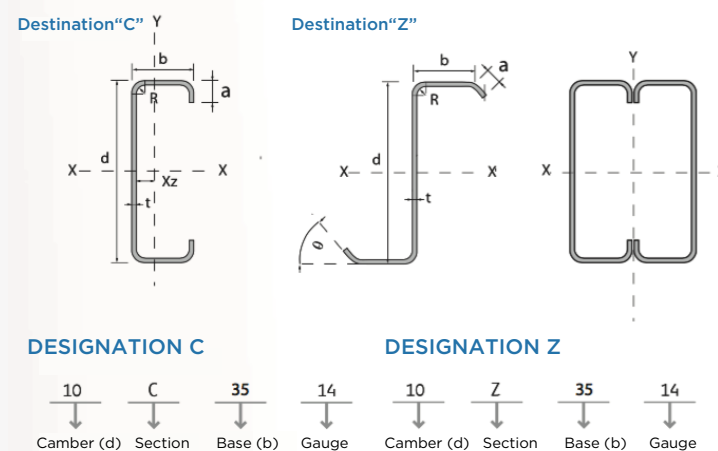


TABLE FOR "C" SECTION

DESIGNATION	d cm	b cm	a cm	R cm	t cm	Peso kg	Area (cm ²)	Ix (cm ⁴)	Sx (ef) (cm ³)	Sx (cm ³)	rx (cm)	Iy (cm ⁴)	Sy (cm ³)	ry (cm)	Xz (cm)
6C2514	15.24	6.35	1.905	0.47625	0.1905	4.57	5.60	206.47	25.68	27.10	6.07	31.39	7.22	2.37	2.00
6C2512	15.24	6.35	1.905	0.47625	0.2667	6.27	7.68	281.74	35.53	36.97	6.06	42.03	9.67	2.34	2.00
8C3014	20.32	7.62	1.905	0.47625	0.1905	5.76	7.05	454.90	41.73	44.77	8.03	53.68	9.87	2.76	2.18
8C3012	20.32	7.62	1.905	0.47625	0.2667	7.93	9.71	624.03	58.57	61.42	8.02	72.36	13.30	2.73	2.18
* 8C3011	20.32	7.62	1.905	0.47625	0.3048	8.98	11.01	705.89	66.52	69.48	8.01	81.12	14.92	2.71	2.18
10C3514	25.4	8.89	1.905	0.47625	0.1905	6.94	8.51	845.30	61.41	66.56	9.97	83.97	12.88	3.14	2.37
10C3512	25.4	8.89	1.905	0.47625	0.2667	9.58	11.75	1163.53	85.51	91.62	9.95	113.72	17.44	3.11	2.37
* 10C3511	25.4	8.89	1.905	0.47625	0.3048	10.88	13.33	1318.46	98.31	103.82	9.95	127.80	19.61	3.10	2.37
* 10C3510	25.4	8.89	1.905	0.47625	0.343	12.32	15.10	1470.99	111.06	115.82	9.86	141.40	21.69	3.05	2.37
* 10C2710	25.4	6.98	1.905	0.47625	0.343	11.26	13.80	1265.33	95.97	99.63	9.57	76.66	14.599	2.35	1.72
12C3514	30.48	8.89	2.54	0.47625	0.1905	7.93	9.72	1338.76	81.35	87.85	11.74	98.92	15.02	3.19	2.30
12C3512	30.48	8.89	2.54	0.47625	0.2667	10.97	13.44	1846.59	113.31	121.17	11.72	134.26	20.40	3.16	2.31
* 12C3511	30.48	8.89	2.54	0.47625	0.3048	12.46	15.27	2094.65	130.16	137.44	11.71	151.06	22.95	3.15	2.31
* 12C3510	30.48	8.89	2.54	0.47625	0.343	14.10	17.28	2339.47	145.86	153.50	11.63	167.32	25.43	3.11	2.31
14C3514	35.56	8.89	2.54	0.47625	0.1905	8.72	10.68	1932.63	100.78	108.70	13.45	103.22	15.21	3.11	2.11
14C3512	35.56	8.89	2.54	0.47625	0.2667	12.07	14.79	2668.92	140.30	150.11	13.43	140.09	20.66	3.08	2.11
* 14C3511	35.56	8.89	2.54	0.47625	0.3048	13.72	16.81	3029.29	161.33	170.38	13.42	157.61	23.26	3.06	2.11
* 14C3510	35.56	8.89	2.54	0.47625	0.343	15.52	19.02	3385.41	180.93	190.40	13.33	174.56	25.77	3.02	2.11

TABLE FOR "Z" SECTION WITH 50° TAB

DESIGNATION	d cm	b cm	a cm	R cm	t cm	Peso kg	Area (cm ²)	Ix (cm ⁴)	Sx (ef) (cm ³)	Sx (cm ³)	rx (cm)	Iy (cm ⁴)	Sy (cm ³)	ry (cm)
6Z2514	15.24	6.35	1.905	0.47625	0.1905	4.57	5.60	181.17	23.78	23.78	5.95	29.54	4.86	2.40
6Z2512	15.24	6.35	1.905	0.47625	0.2667	6.27	7.68	242.92	31.88	31.88	5.89	36.56	6.24	2.28
8Z3014	20.32	7.62	1.905	0.47625	0.1905	5.76	7.05	432.69	41.73	42.59	7.94	68.85	8.68	3.17
8Z3012	20.32	7.62	1.905	0.47625	0.2667	7.93	9.71	595.46	58.57	58.61	7.90	93.78	11.94	3.14
* 8Z3011	20.32	7.62	1.905	0.47625	0.3048	8.98	11.01	661.82	65.14	65.14	7.86	96.93	12.71	3.01
* 10Z2710	25.4	6.98	1.905	0.47625	0.343	11.26	13.80	1251.84	98.57	98.57	9.52	108.30	14.45	2.80
10Z3514	25.4	8.89	1.905	0.47625	0.1905	6.94	8.51	734.74	57.85	57.85	9.69	69.65	8.46	2.98
10Z3512	25.4	8.89	1.905	0.47625	0.2667	9.58	11.75	1013.85	79.83	79.83	9.65	94.95	11.65	2.95
* 10Z3511	25.4	8.89	1.905	0.47625	0.3048	10.88	13.33	1126.60	88.71	88.71	9.59	97.60	12.31	2.82
* 10Z3510	25.4	8.89	1.905	0.47625	0.343	12.32	15.10	1456.96	114.72	114.72	9.82	209.55	22.30	3.72
12Z3514	30.48	8.89	2.54	0.47625	0.1905	7.93	9.72	1327.98	87.14	87.14	11.69	146.93	14.58	3.89
12Z3512	30.48	8.89	2.54	0.47625	0.2667	10.97	13.44	1818.57	111.59	119.33	11.63	191.94	19.46	3.78
* 12Z3511	30.48	8.89	2.54	0.47625	0.3048	12.46	15.27	2073.06	130.16	136.03	11.62	220.71	22.36	3.79
* 12Z3510	30.48	8.89	2.54	0.47625	0.343	14.10	17.28	2326.8	125.67	152.67	11.60	249.87	25.28	3.80
14Z3514	35.56	8.89	2.54	0.47625	0.1905	8.72	10.68	1632.93	91.84	91.84	12.96	66.41	8.17	2.61
14Z3512	35.56	8.89	2.54	0.47625	0.2667	12.07	14.79	2229.15	125.37	125.37	12.88	84.45	10.67	2.51
* 14Z3511	35.56	8.89	2.54	0.47625	0.3048	13.72	16.81	2544.88	143.13	143.13	12.87	97.60	12.31	2.52
* 14Z3510	35.56	8.89	2.54	0.47625	0.343	15.52	19.02	3363.84	189.19	189.19	13.29	250.04	25.30	3.62

* ESTOS PERFILES SE FABRICAN BAJO PEDIDO ESPECIAL. / PERFILES NO MOSTRADOS EN ESTA TABLA SE FABRICAN BAJO PEDIDO ESPECIAL.

* ESTOS PERFILES SE FABRICAN BAJO PEDIDO ESPECIAL. / PERFILES NO MOSTRADOS EN ESTA TABLA SE FABRICAN BAJO PEDIDO ESPECIAL.