

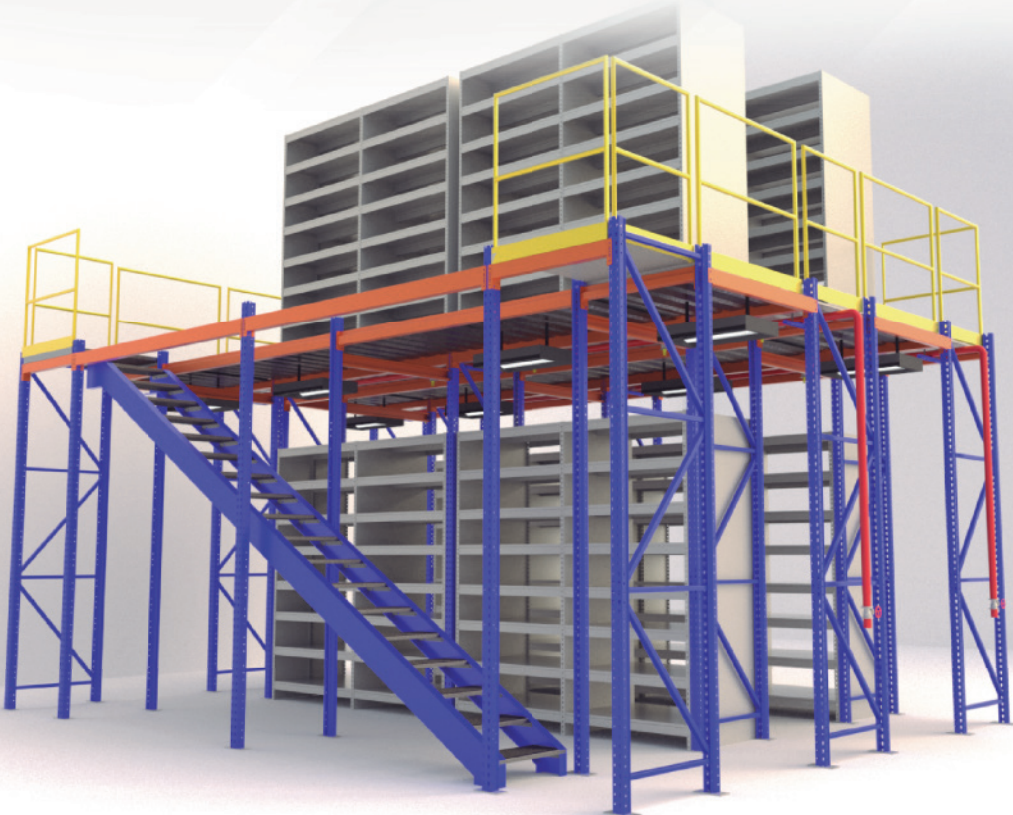
A perspective view of a long, multi-tiered industrial metal storage rack system. The racks are made of light-colored metal and are arranged in a row, receding into the distance. The background is a plain, light-colored wall and floor.

# COMMERCIAL CATALOG STORAGE SYSTEMS

Creating Value through **Space Optimization**

# INDEX

- Punto Alto Group**.....3
- About Us** .....4
- Business Units**.....5
- The ESJ Difference**.....7
- Selective Rack**.....8
- Cantilever Rack**.....9
- Specialty Systems** .....10
- Our Criteria** .....11
- Contact information**.....12



# PUNTO ALTO GROUP



01



30+ YEARS OF EXPERIENCE

02



14 AFFILIATED COMPANIES

03



2000+ COLLABORATORS

04



7 INDUSTRIAL FACILITIES

05



NATIONAL FOOTPRINT

06



INTERNATIONAL CUSTOMERS

## OUR MISSION

At Grupo Punto Alto we are committed to create value as a result of our passion to serve and innovate in everything we do.

For more than 30 years we have participated in construction, real estate, metalworking, aeronautical and services business sectors.

We measure our business success generating personal and professional development opportunities for our more than 2,000 collaborators, contributing to the construction of a better society.



# ABOUT US

We are a leader in expertise for design, fabrication and supply of structural steel solutions. Evolving from specialists in joist manufacturing, into a company capable to offer different structural systems for different markets.

Customer service, installed capacity and delivery times sets us apart from competitors. We are passionate about industrial steel transformation to build a better community, pursuing market leadership wherever we participate.

# BUSINESS UNITS

To fulfill our customer value expectations in every market, we are organized in 6 Business Units with a combined output of more than **5,000 Metric Tons per month.**



# BUSINESS UNITS

## CONSTRUCTION

This business unit offers design, supply and manufacturing services for structural and rolled steel solutions for all types of buildings with an installed capacity to produce 3,000 metric tons per month of structural elements such as joists, armoring and accessories, In addition to 2,000 metric tons per month of rolled sheet. Our design systems and Products are certified and endorsed by top institutions such as: SJI, AWS, FM, among others.

## DISTRIBUTION

This business unit supplies cold rolled steel profiles for steel products marketers and distributors for the construction industry. Our capacity for a production of 2,000 thousand metric tons allows us to offer optimal delivery times. We look for long term relationships and strong communication with customers to ensure a successful supply chain.

## ENERGY AND MINING

With an installed capacity to manufacture 500 Metric Tons of structural and mechanical steel per month, combined with other product families, this business unit offers structural elements integral solutions. We operate specialized production lines, along with a qualified engineering team, CNC equipment and latest generation software enabling us to comply with customers timing and quality requirements.

## IS2

This business unit integrates our different specialties, enabling us to offer design and complete prefabrication of our clients buildings with maximum efficiency, as a result of combining our value engineering capabilities and our structural solutions production capacity.

## STORAGE SYSTEMS

This business unit designs and manufactures storage structures according to customer requirements, seeking to optimize spaces and improve materials handling. We have the ability to custom design and manufacture traditional systems such as selective and dynamic racks in structural and cold rolled versions, thanks to structural analysis performed by our engineering area in compliance with industry regulations. Our ability to produce 800 Metric Tons monthly allows us to execute large wingspan projects according to customer needs.

## INDUSTRIAL

This business unit offers metal mechanic working capacities including cutting, bending, punching and component assembly, supported by our own service center, which makes us a strategic partner in the productive chain of transformation industry. Our proven installed capacity allows us to be flexible when facing customer needs and delivery times, aligned to certifications required by the industry.



# THE ESJ DIFFERENCE



Delivery times, a result of our optimized installed capacity.



Cross-Functional engineering Keyturn projects.



Capacity of 800 tons with electrostatic impregnation painting.

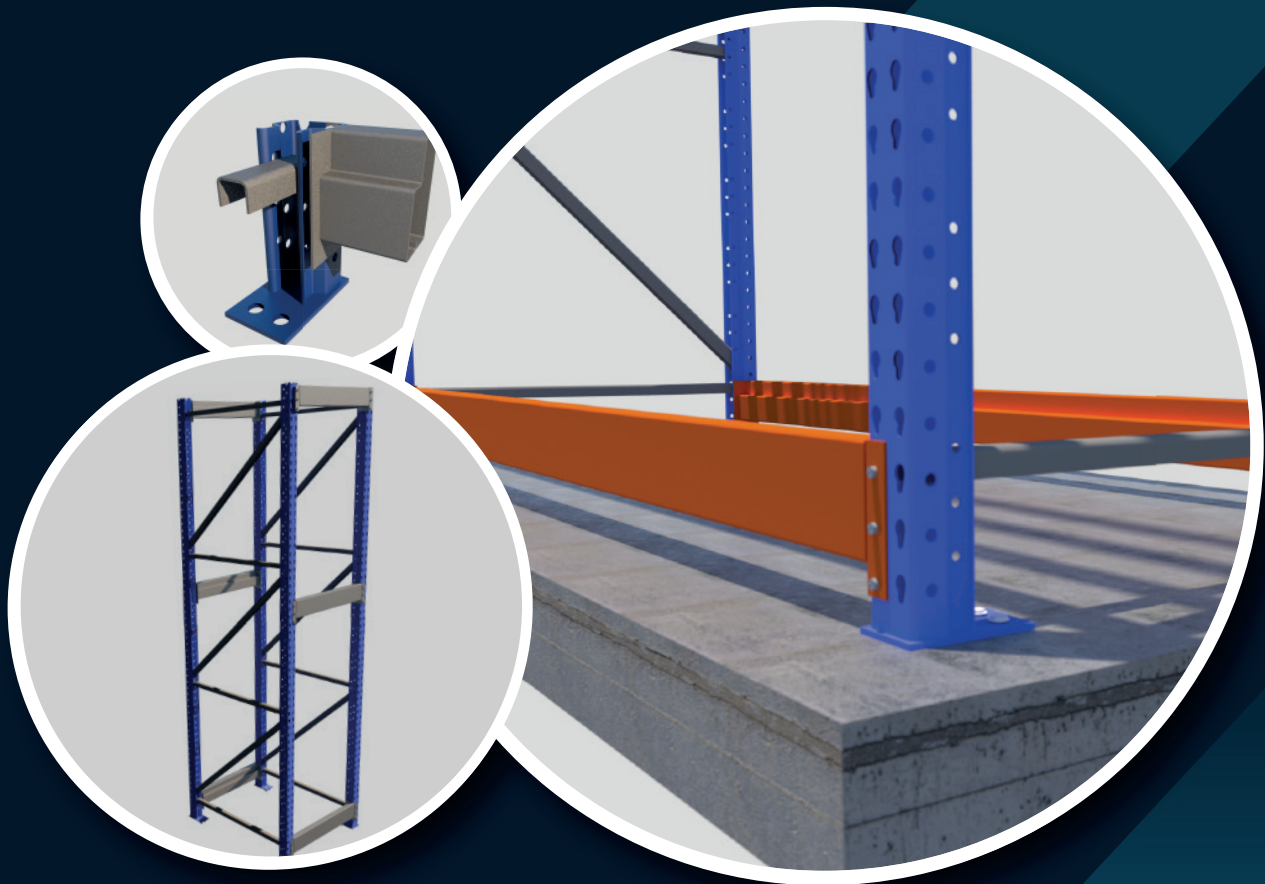
# SELECTIVE RACK (STRUCTURAL AND SHEETMETAL)

This system offers simplicity in its storage logistics; as access and accommodation of materials is available directly to all loading positions. This type of system is compatible with any load vehicle, its installation and disassembly is extremely practical.

The system is made from Omega type sheetmetal profiles, C sections and staggered beams in different steel calibers and grades, designed by our team of Structural Engineers to offer the maximum load capacities optimizing the use of material. Our team always factors the seismic behavior of our customer construction location for the structural calculations.

Depending on the material handling needs, we offer a series of accessories for pallets support and the safety of racks against strikes caused by Inventory placement operations.

Unlike sheetmetal, structural selective rack system is made of beams, crossed members and frames based on high resistance channels ideal for storage requirements when loads are considerable.



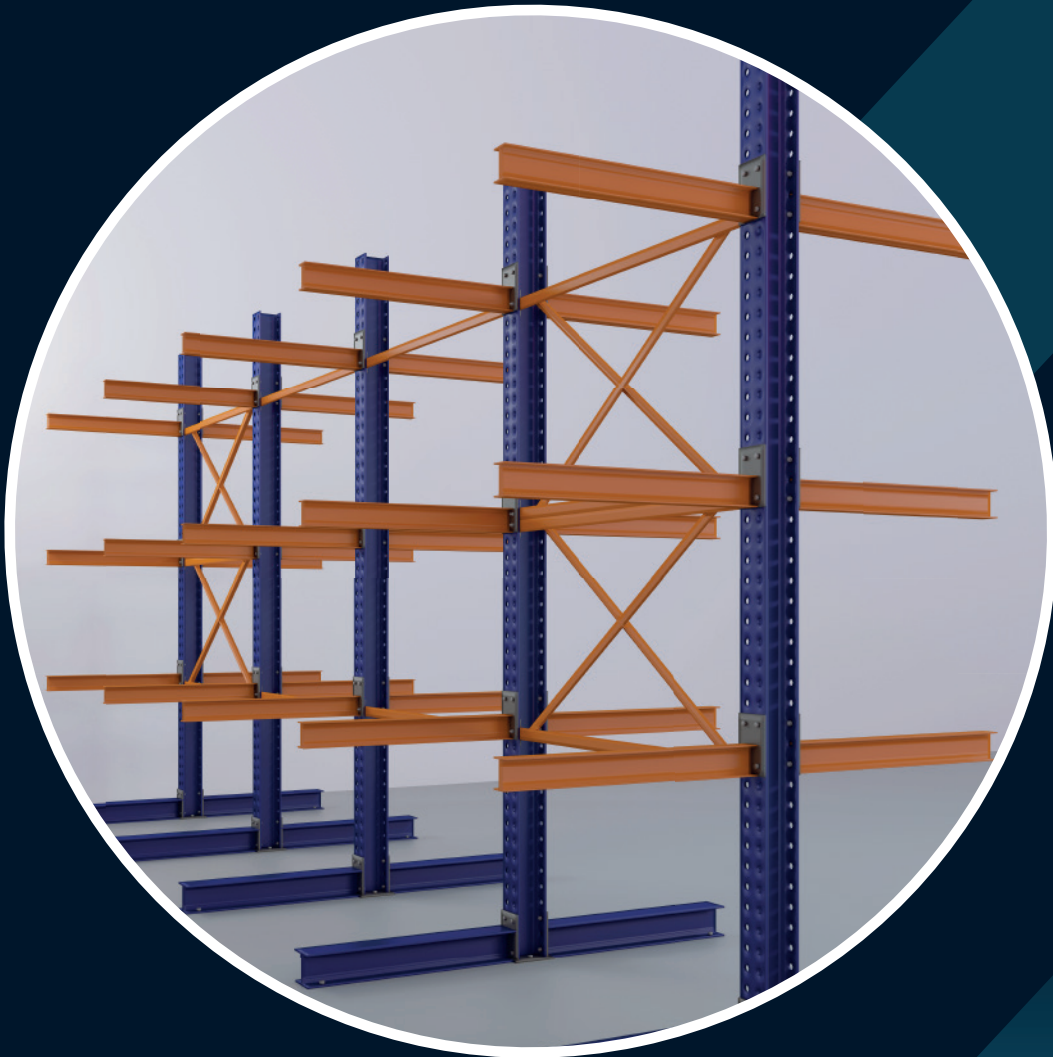


# CANTILEVER RACK (STRUCTURAL AND SHEETMETAL)

This system offers simplicity in its storage logistics; mainly for large length materials such as piping, rods, etc.

As our other systems, access and placement of materials is available in a Direct path to all loading positions. Its installation and disassembly is very simple.

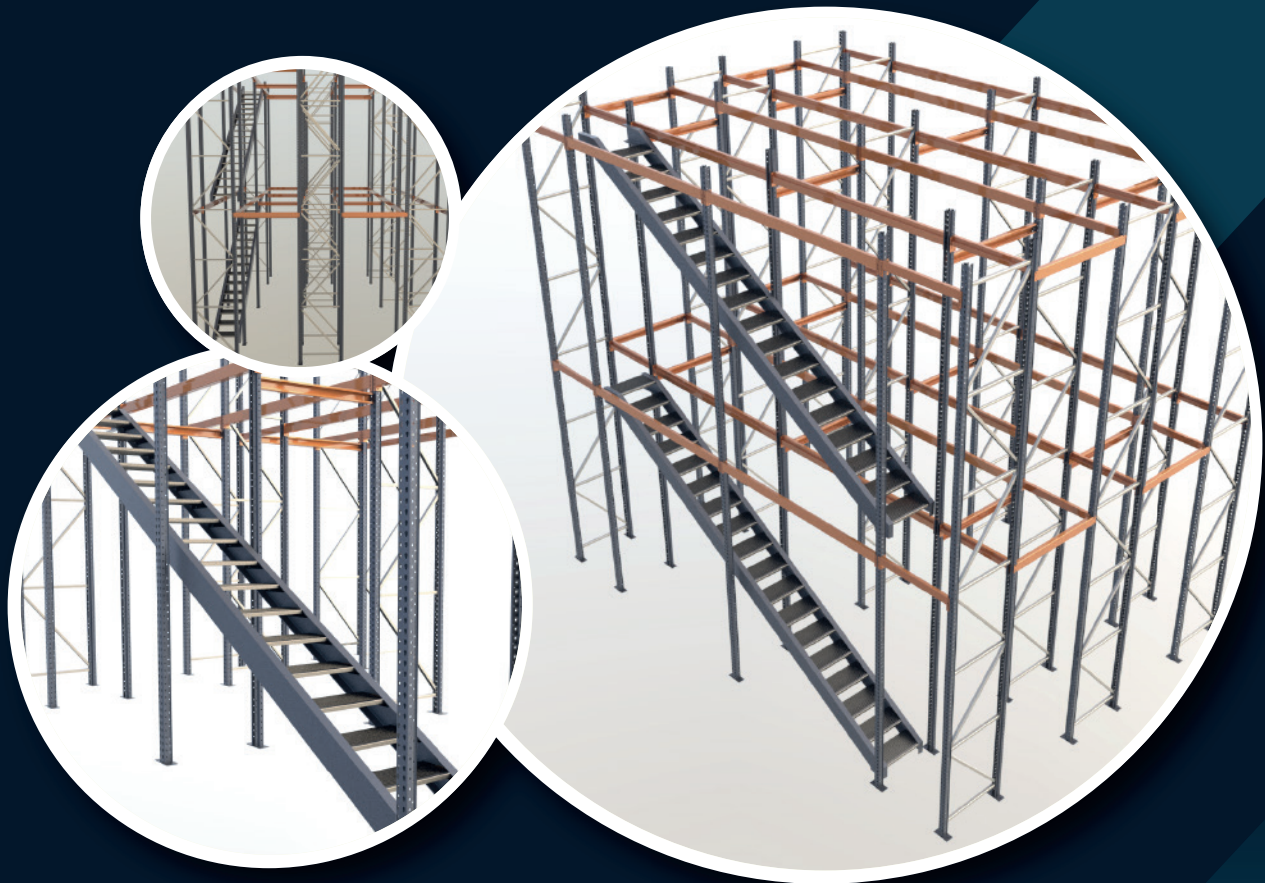
The system consists of sheetmetal sections or high strength structural sections, designed by our team of structural engineers to offer maximum load capacities, optimizing the use of material. This team always factors the seismic behavior of our customer construction location for structural calculations.



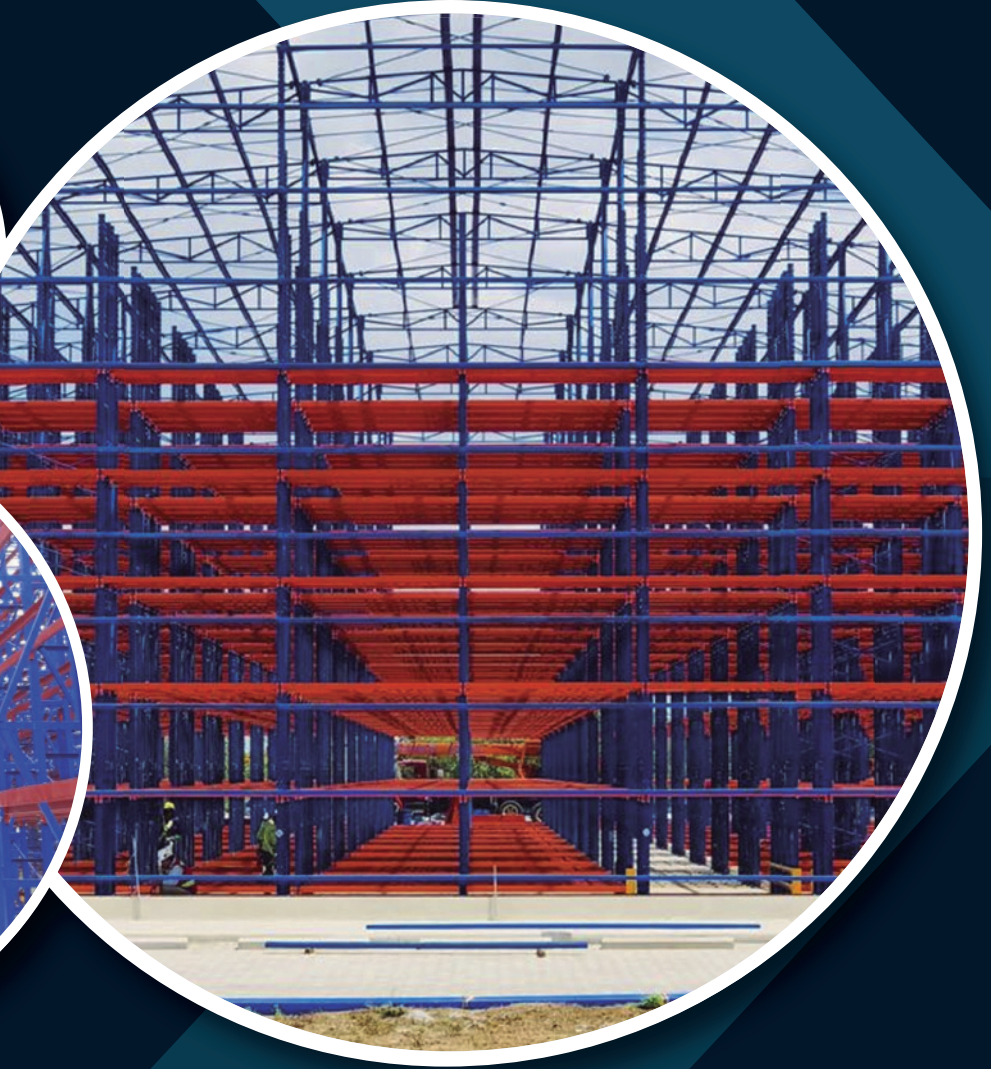
# SPECIALTY SYSTEMS

Being part of a Construction Group, ESJ has the ability to offer turnkey systems such as: Rack based Mezzanines, Picking Modules and Self-supported buildings. Covering from design, manufacturing and cross functional coordination such as: Ventilation systems, Fire suppression, electrical and civil works inside the building.

Our team of engineers is able to evaluate a series of alternatives and solutions, combining our systems and product families. To offer an integral solution according to the particular storage challenges of each customer.



# PROJECTS



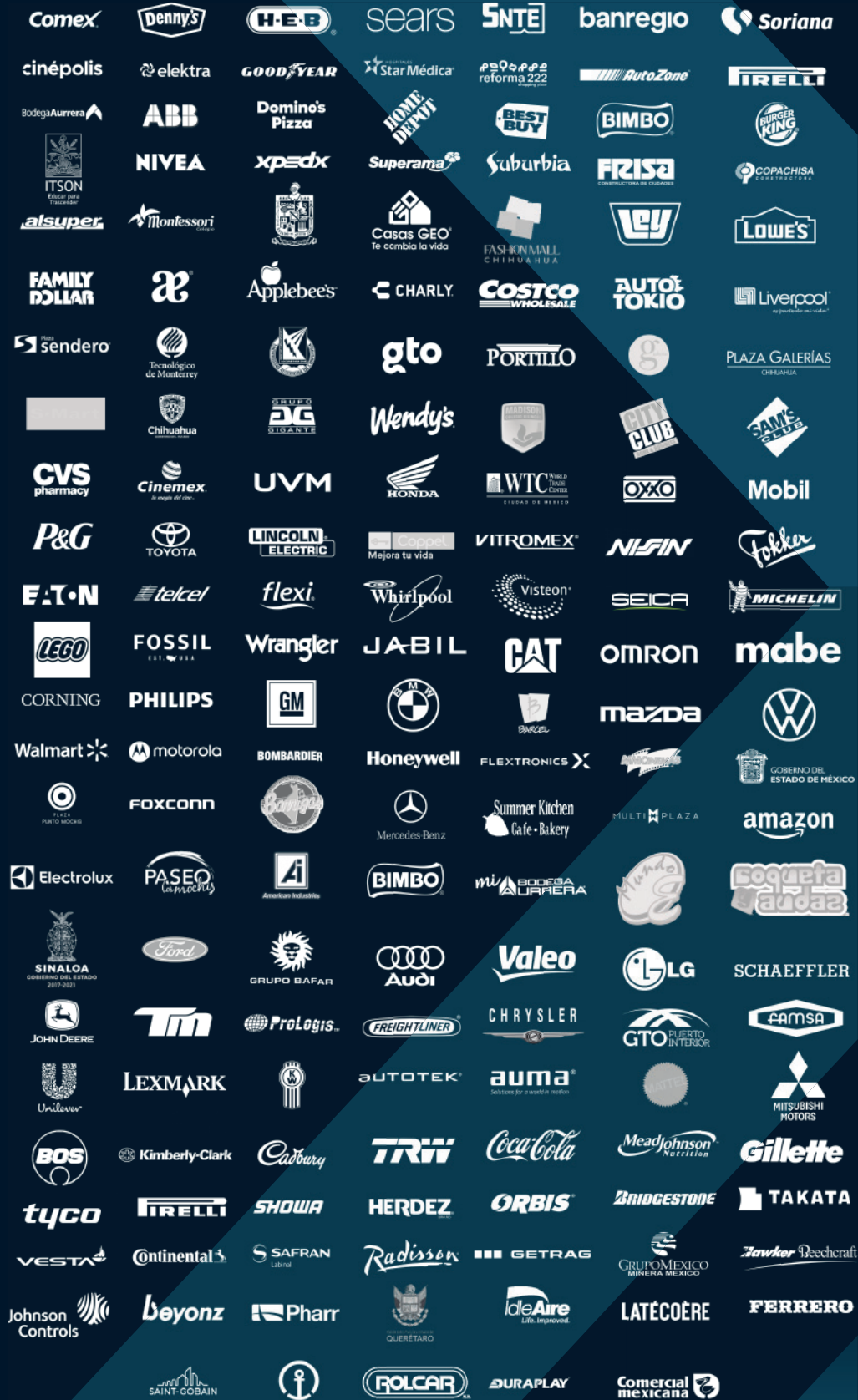
# OUR DESIGN PHILOSOPHY

All our Design criteria is in adherence to international standards such as:





American Welding Society

# CLIENTS





 Centro ejecutivo Punto Alto  
Valle Escondido #5700 C.P. 31125  
Fracc. Desarrollo El Saucito  
Chihuahua, Chih. México

 Tel. +52 (614) 4 29 92 00  
01 800 523 0789

 [servclientes@esj.mx](mailto:servclientes@esj.mx)

 [esj.mx](http://esj.mx)